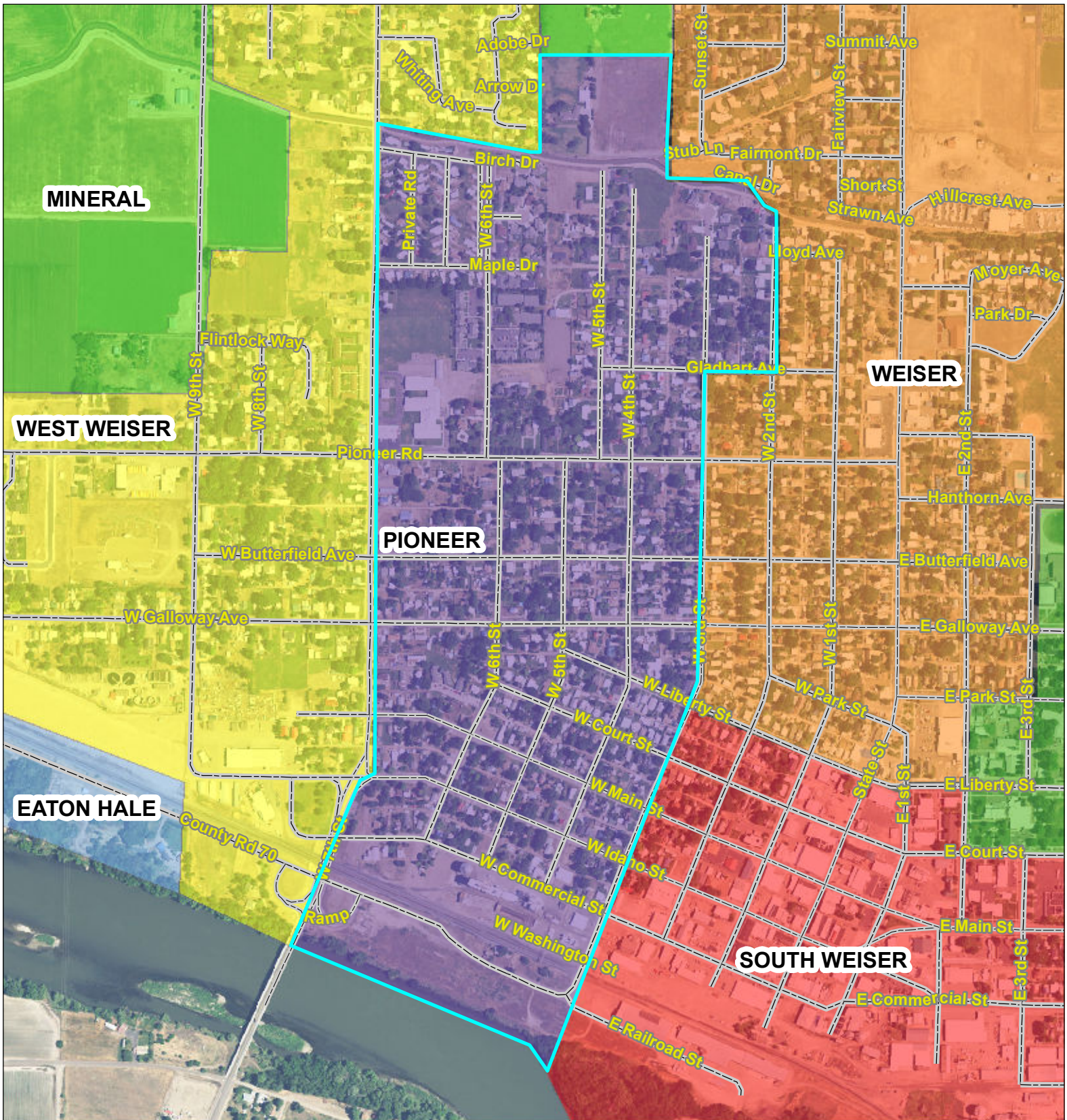




# THIS MAP CREATED BY THE OFFICE OF THE WASHINGTON COUNTY ASSESSOR



BASED ON GOVERNMENT SURVEYS & OFFICIAL RECORDS  
ON FILE AT THE OFFICE OF THE COUNTY RECORDER OF  
WASHINGTON COUNTY, IDAHO.  
FOR ASSESSMENT PURPOSES ONLY  
DOES NOT GUARANTEE BOUNDARIES

0 0.1 0.2 Miles 1 inch = 730.6 feet

- |  |                          |  |                    |  |                 |
|--|--------------------------|--|--------------------|--|-----------------|
|  | <b>TOWNSHIP LINES</b>    |  | <b>ROADS - ALL</b> |  | DIRT OR GRAVEL  |
|  | <b>SECTION LINES</b>     |  | U S OR STATE HWY   |  | CITY STREETS    |
|  | <b>1/4 SECTION LINES</b> |  | PAVED              |  | NATIONAL FOREST |
|  | <b>RIVERS</b>            |  | PAVED              |  | PRIVATE         |
|  |                          |  | GRAVEL OR DIRT     |  |                 |